

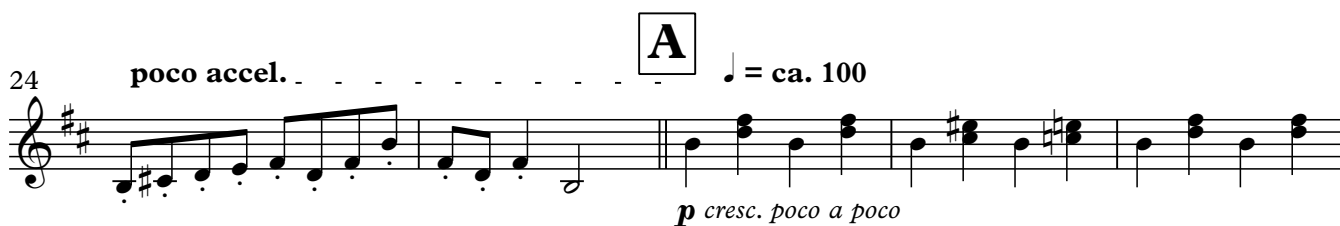
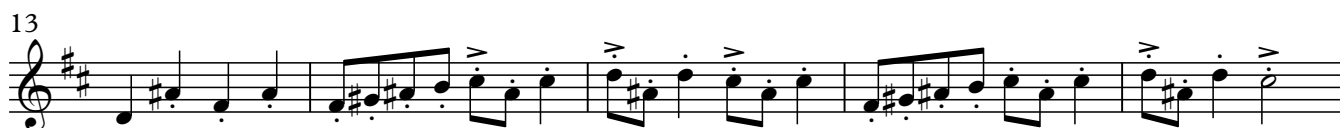
In der Halle des Bergkönigs

(aus der Peer-Gynt-Suite Nr. 1, op. 46)

Edvard Grieg (1843-1907)

Arrangement: Keno Hankel

♩ = ca. 80



40 $\text{♩} = \text{ca. } 132$ **accel.**

mf cresc. poco a poco

45

Ab hier nur noch
2 Klicks pro Takt!

50 **B** $\text{♩} = \text{ca. } 180$

f

56 **accel.**

62 $\text{♩} = \text{ca. } 200$ **C** $\text{♩} = \text{ca. } 220$

68 **accel.**

74 **D** $\text{♩} = \text{ca. } 240$

81